

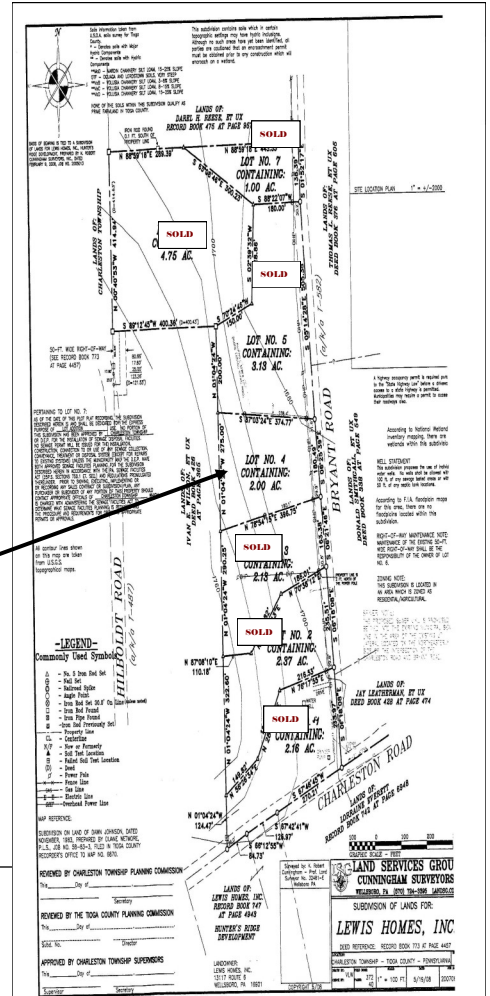
# Lot for Sale 2 Miles from Wellsboro

From Main St in Wellsboro, turn on Charleston St.  
 From McDonalds, go 2 miles to Bryant Rd on the left.  
 Site is the 4th on the left.



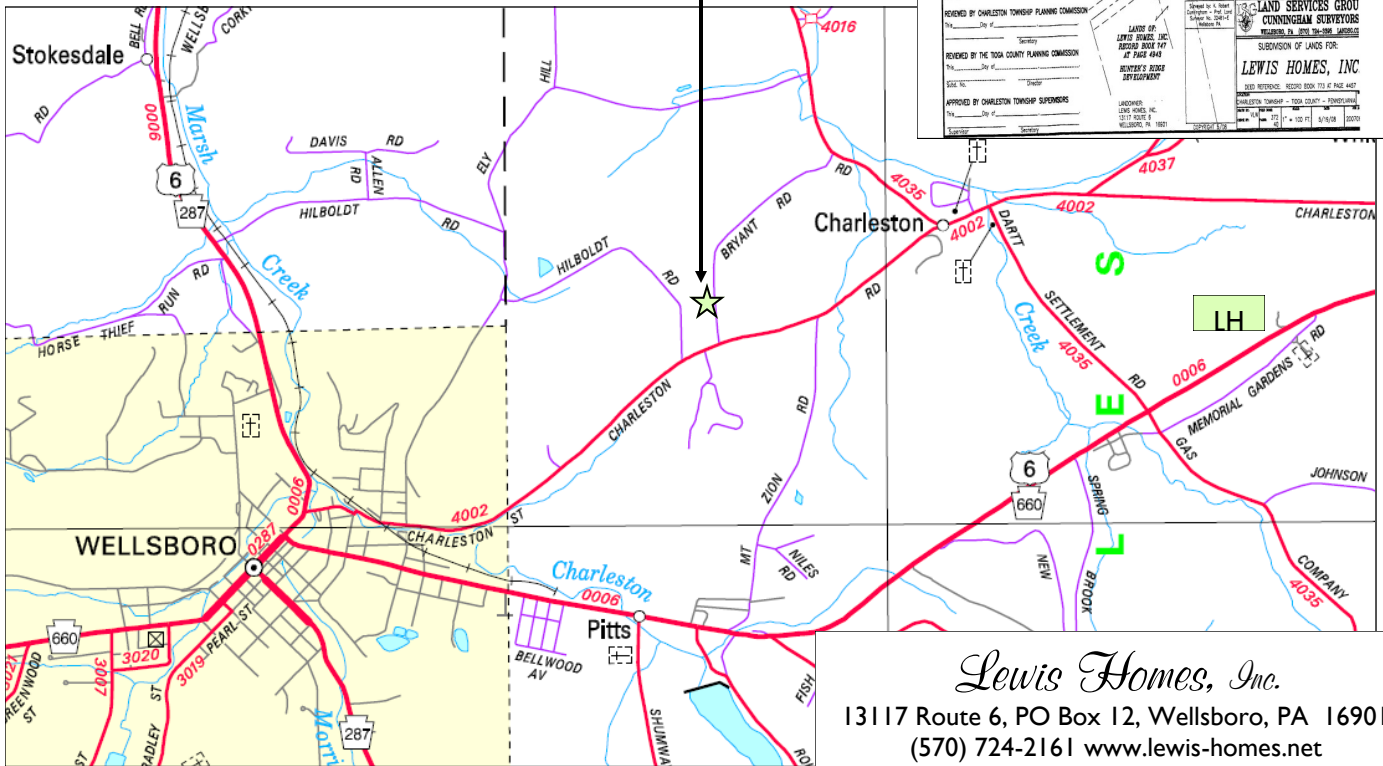
Last site available from a 6 lot subdivision. Great neighborhood, and only a short distance to town. Level site, easy to build on.

Lot 4  
Bryant Rd



We are currently making improvements to this lot. The driveway is in and an area is leveled off for a home.

Public sewer, gas, & electric are along the front of the property.  
 The well to be drilled.



*Lewis Homes, Inc.*  
 13117 Route 6, PO Box 12, Wellsboro, PA 16901  
 (570) 724-2161 [www.lewis-homes.net](http://www.lewis-homes.net)  
 Open 7 days a week